



Position Update

This final quarter of FY22 proved once again the desire of our NW OK producers' desire to improve their lands and buy in to the landscape level management approach.

Once again there was no shortage of opportunity, especially with the new Great Plains Grassland Initiative. The producers are very excited about the addition of this program at I look forward to seeing more of how this will evolve on the landscape over the next several rounds.



This is an example of GPGI at work. Part of a +/-3,000ac prescribed fire in Woods County.

On the Road Again

After EQIP and GPGI finished up, we immediately hit the road out to the panhandle to help with the CRP load. After a week in Boise city, a week in Guymon, and multiple trips to Beaver County, we knocked out over 120,000ac of CRP Grasslands applications!

Conservation Planning

- 30 Landowner Contacts
- 122 Site Visits
- 30 Projects with Acres
- 4 Burn Plans

Other Programs	Acres Assessed	Acres Impacted
CTA USDA/Nonprogram/State Cost Share		480
EQIP Brush Management, Conservation Cover, Forest Stand Improvement, Wetland Restoration, Prescribed Fire		12,704.3
OLAP		
CRP General, Grasslands	49,131.78	
GPGI Brush Management, Prescribed Grazing/ burning, IPM		24,728
Total	49,131.78	37,912.3



Local SWCDs

Thank you so much for your support! Without this partnership, I wouldn't be able to provide assistance to private landowners and positively impact conservation in Oklahoma!



Outreach & Education

- I gave an interview to national PFQF about cedar management and removal in NW OK. This article is on the PFQF website for all to read!
- I assisted with a youth turkey hunt this spring. This is a special hunt with youth who have or had serious health complications, and this is a super neat way to expose them to the outdoors and the hunting world.
- I hosted a informational booth with ODWC personnel at the Woodward farm/ranch expo. We had many good interactions with folks during the event.

Our team is back to full strength!

Outreach & Education	Count
Newsletter Articles/State Facebook Articles Written	1
Conservation/Outreach Event	2
Workshops	
Total	3



Coordinating Wildlife Biologist **USDA**

Quarterly Partners' Report



Tanner Swank - Northwest Oklahoma

April–June 2022



Checking out cedar cutting for contracts, stacking large trees in tight piles and along draws helps eliminate skeletons and inaccessible trees once we follow up with prescribed fire.

Training/Meeting Type	Outcome
Partners Meeting	Gave an update to farm bill programs and how QF is helping NRCS implement them in NW OK, and the impact associated.
CRP Training	Provided multiple CRP trainings, both as refreshers and as first time trainings to folks who were helping with the CRP load this year.
All Team Meeting	Attended the all PFQF employee team meeting where everyone was able to get together for the first time since covid first started.
WHEG Training	Provided refresher WHEG training for field staff and new employees.

Looking Forward

- I will be continuing to promote GPGI through NW OK
- I will be attending a fire/grazing field day in Commanche County KS.
- I will be working with partners to host a couple outreach meetings later this summer on cedar encroachment and GPGI.
- I will be assisting PFQF staff with another fire field day in Barber County KS on the Z Bar ranch
- I will be attending the 2022 Great Plains Fire Summit in North Platte Nebraska
- I will be continuing to do the rain dance, hopefully we keep getting some rains out here, and that the oven turns off that's baking us!

**If anyone wishes to discuss habitat projects or knows others who are interested; please contact me at the information below.*

Tanner Swank
Coordinating Wildlife Biologist
 Woodward, Blaine, Major, Dewey, Ellis
3300 Oklahoma Ave
Woodward OK, 73801

620-566-7179
tswank@pheasantsforever.org



Coordinating Wildlife Biologist

Quarterly Partners' Report



Leslie (Welch) Elmore- Statewide

April - June 2022

On the Road Again

From Minnesota to Mississippi, it has been wonderful to return to in-person meetings and trainings!

After three years on the job, I finally attended New Employee Orientation ahead of the PF/QF All-Teams Meeting in Welch, Minnesota. Spending three days with 450+ passionate PF/QF employees was an incredible experience!

In late June, Zach Brewer and I road-tripped to Mississippi for Bobwhite Bootcamp. During our windshield time and 3 days of jam-packed training we formed and forged relationships with many of our co-workers across the country.

In addition to receiving training, I have been able to provide training to new NRCS staff in my area. The time spent together allowed discussion of conservation practices for wildlife as well as how partners can assist field office staff—and how eager we are to do so.



I snapped this roadside selfie near a Minnesota town that shares my maiden name.

Other Programs	Acres Impacted
CTA	
338 - Rx Burning	100.0
511 - Forage Harvest Management	113.5
EQIP	
338 - Rx Burning	41.0
647—Early Successional Habitat Dev't	26.5
Total	281

Conservation Planning
◆ 24 landowner contacts
◆ 16 site visits
◆ 1 conservation plan
◆ 1 habitat plan
◆ 1 burn plan



Local SWCDs

Thank you so much for your support!

Without this partnership we would not be able to provide assistance to private landowners and positively impact conservation in Oklahoma!

Leslie Elmore
Coordinating Wildlife Biologist
Statewide

100 USDA Suite 206
Stillwater, OK 74074

405-714-8886
lelmore@quailforever.org



Coordinating Wildlife Biologist

Quarterly Partners' Report

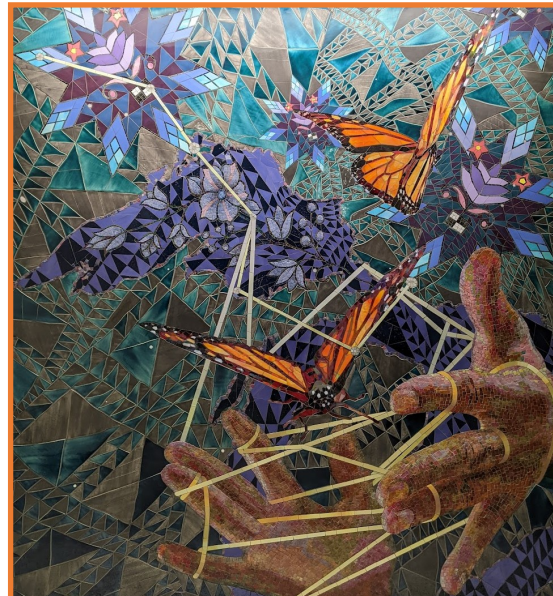


Leslie Elmore - Statewide

April - June 2022

Outreach & Education

- I discussed the Cross Timbers Initiative within the WLFW Bobwhite Framework to partners from OPJV, ODWC, and USFWS.
- I joined a monthly meeting of the Red Bud QF Chapter in Shawnee, OK.
- I co-authored an OSU Extension fact sheet explaining how and why a landowner can convert an introduced pasture to native grasslands for wildlife.
- I contributed to the Quail Field Day at James Collins WMA.
- I provided training to partners on the tools and methods for assessing properties interested in enrolling in the Cross Timbers Initiative.
- I demonstrated the hack-and-squirt method of individual tree treatment to open hardwood canopy to landowners and QF chapter members.
- I attended the Pontotoc Field Day and contributed content to the day, while making contacts with landowners and partners in the area.
- This quarter's Facebook posts covered Mother's Day, Father's Day, Pollinator Week, and plantings, tying it all back to monarch and pollinator conservation.
- I demonstrated the Monarch WHEG and discussed how partners can assist NRCS field office staff.
- I had the privilege of mentoring some new QF employees at Bobwhite Bootcamp.



One of the many beautiful mosaics at the Minneapolis-Saint Paul airport



Cross Timbers Management Field Day at James Collins WMA

Outreach & Education	Count
Events/Workshops	7
Participants	136
Publications	1
Presentations Delivered	5
Social Media Articles	4
Total	17



Coordinating Wildlife Biologist Quarterly Partners' Report



Leslie Elmore- Statewide

April - June 2022



Over 450 PF & QF employees from around the country gathered together for the first time in three years.

Training/Meeting Type	Outcome
PF/QF All-Teams Meeting	The meeting and new employee orientation are designed to help PF/QF employees connect and share ideas, while motivating everyone to continue doing great work.
Training for Job Approval Authority on Forest Stand Improvement	Watching webinars and studying resources are all part of getting JAA for CPS 666, a practice I will use often with the Cross Timbers Initiative.
Oklahoma Partners' Meeting	Partners from ODWC, QF, ODWC, and USFWS came together to meet and discuss initiatives and programs to assist landowners and Oklahoma's wildlife.
Working Lands for Wildlife Bobwhite Bootcamp	This training covered nearly every imaginable facet of management needed for assisting with the WLFW Bobwhite assistance program. We learned everything from population dynamics to calibrating seed drills.
Wetland Training	I learned about moist soil management for waterfowl.
Annual CSP Training	This was the annual refresher on how to implement the Conservation Stewardship Program.

Looking Forward to ...

- Oklahoma Quail Forever Annual Convention
- Summer Burning Field Day at Lexington WMA
- More training on the Working Lands for Wildlife: Bobwhite Framework
- NRCS Partners Biologists Meeting
- SCUBA diving in Belize

If anyone wishes to discuss habitat projects or knows others who are interested, please contact me at the information below.

Leslie Elmore
Coordinating Wildlife Biologist
Statewide

100 USDA Suite 206
Stillwater, OK 74074

405-714-8886
lelmore@quailforever.org



Field Staff

Quarterly Partners' Report



Zach Brewer - Northeast Oklahoma Counties

April-June 2022

In June, I went out and conducted several range inventory surveys for CSP contracts in southern Rogers county and have helped with several site visits around my area. This has been a great way to get to know the people I will be serving in Northeast Oklahoma. I have also been able to get to know some of the different plants that are found in the tall grass region of the United States. Currently I am in the middle of a EQIP-RCPP sign up and have had two landowners inquire about the program so far.



Conservation Planning

- 19 Landowner Contacts
- 1 Habitat Proposals & Conservation Plan
- 19 Site Visits
- 8 Survey and data Collection
- 1 NRCS Planner Training

Other Programs	Acres Impacted
CTA- Grazing Plan	12
Total	12

Thank you so much for your support! Without this partnership, I wouldn't be able to provide assistance to private landowners and positively impact conservation in Oklahoma!



Field Staff

Quarterly Partners' Report



Outreach & Education

Zach Brewer -

April-June 2022

- On April 23, I attended the chapter pollinator planting with **Big Bluestem QF**. I was able to talk to event attendees about the importance of pollinator and the habitat.
- On May 16th, I attended the **Panhandles Nomad QF** Chapter start up meeting and presented myself at the meeting in
- On May 23th, I attended the monthly meeting of the of the **Indian Territory QF Chapter**. I was able to meet chapter members and talk to them about cost share programs we are offer through the NRCS and ODWC.
- On June 4th, I helped with a outreach booth for the **Big Bluestem QF Chapter** at Sun Fest in Bartlesville, OK



This photo was taken at the Sun Festival in Bartlesville, Oklahoma. I was able to talk to the general public about habitat programs and answer any questions about bird biology.

The Sun Festival booth was put on by the Big Bluestem QF Chapter as part of there community outreach efforts in educating the public about Bobwhite Quail habitat and how landowner can improve habitat on their property .

Outreach & Education	Count
Presentations Delivered	4
Outreach Events	2
Total	6



Field Staff

Quarterly Partners' Report



Zach Brewer - Northeast Oklahoma Counties

April-June 2022

Biologist's Point of View - Quail Management Field Day



This photo was taken at the quail management field day at James Collins Wildlife Management Area on May 27th

Training/Meeting Type	Outcome
Quail Habitat Management field Day at James Collins WMA	This field day was put on by Oklahoma state University , Oklahoma department of Wildlife Conservation, and Oklahoma Quail Forever. The field day had 51 participants and 22 of them were landowner. The field day cover the importance of prescribed fire on the landscape and how to use it in the affective way when managing for quail and other wildlife.
NRCS Conservation Planning Boot Camp	Completed my planner bootcamp for the NRCS to become a certified level 1 planner
Quail Forever All Team Meeting	In May, I attended the National All Team meeting in Welch, MN. Learn about wildlife management practices in other parts of the United States and got to talk with other fellow biologist .

Looking Forward

- I will be helping with the Oklahoma statewide distract meeting in August in Guthrie, Oklahoma
- This upcoming quarter, I plan to focus on writing RCPP specific habitat proposals for landowners

- in Craig, Nowata, Osage County to promote implementation of conservation practices to provide quality wildlife habitat.
- Bobwhite Bootcamp that Quail Forever is putting on in West Point, Mississippi .

**If anyone wishes to discuss habitat projects or knows others who are interested; please contact me at the information below.*

Zach Brewer

1900 West Will Rogers Circle

580-651-7122

Farm Bill Wildlife Bio 2

Claremore, OK 74017

zbrewer@pheasantsforever.org

Northeast Oklahoma Counties